

HUNTER 456



DISCOVER THE DIFFERENCE

30
YEARS



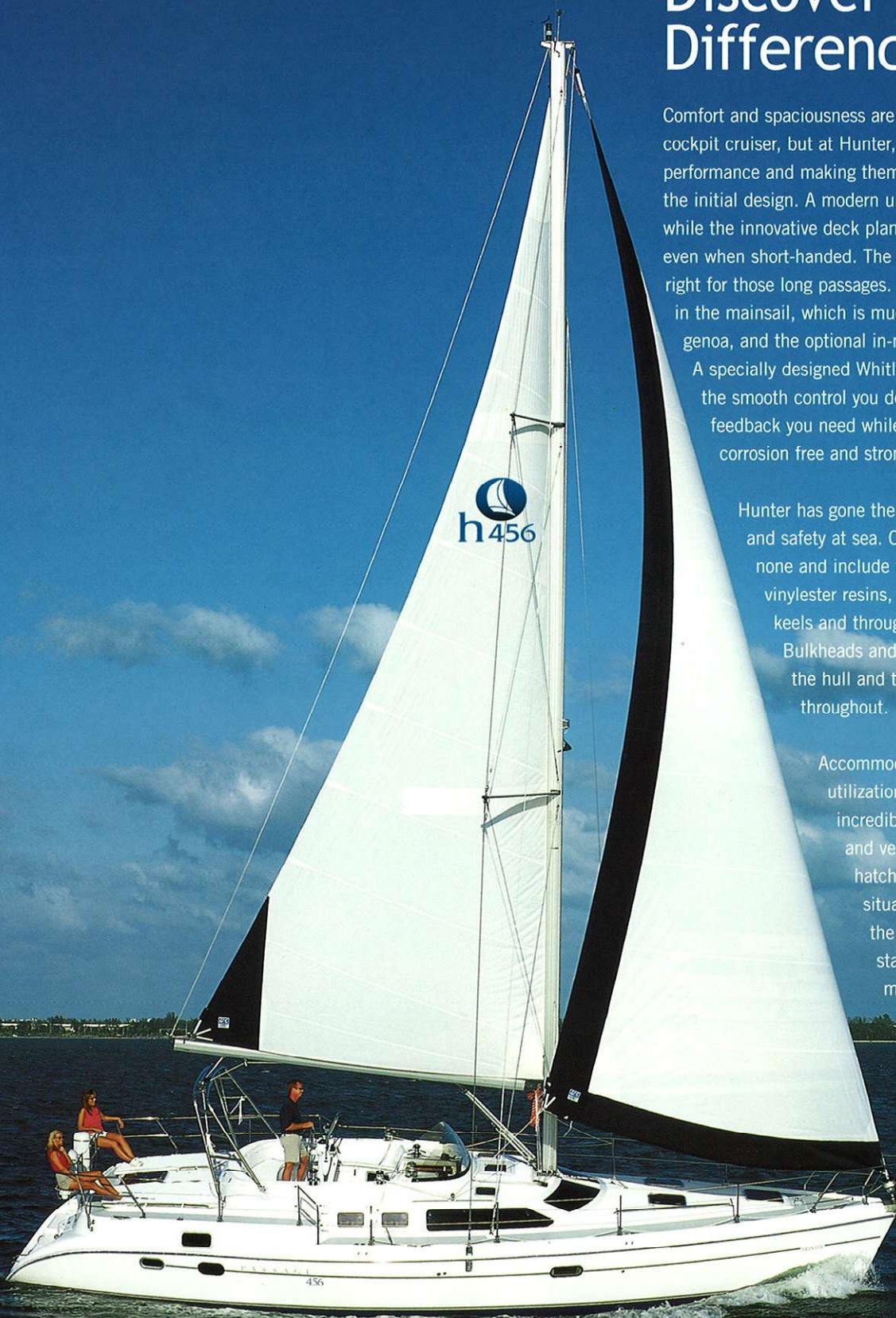
Discover the Difference.

Comfort and spaciousness are the usual hallmarks of a center cockpit cruiser, but at Hunter, we've concentrated on adding real performance and making them easy to sail. The difference lies in the initial design. A modern underbody provides the performance while the innovative deck plan offers safe and easy sail handling, even when short-handed. The cockpit is wide and deep and just right for those long passages. A tall B & R rig gives you the power in the mainsail, which is much easier to tame than a monster genoa, and the optional in-mast furling system adds to the ease. A specially designed Whitlock® gear steering system gives you the smooth control you desire with just the proper amount of feedback you need while the composite rudder and post are corrosion free and stronger than conventional gear.

Hunter has gone the extra step in ensuring your comfort and safety at sea. Construction methods are second to none and include the finest in materials, including vinylester resins, Kevlar® hull reinforcements, real lead keels and through bolting on the hull to deck joint. Bulkheads and chainplates are bonded directly to the hull and the loads are spread evenly throughout.

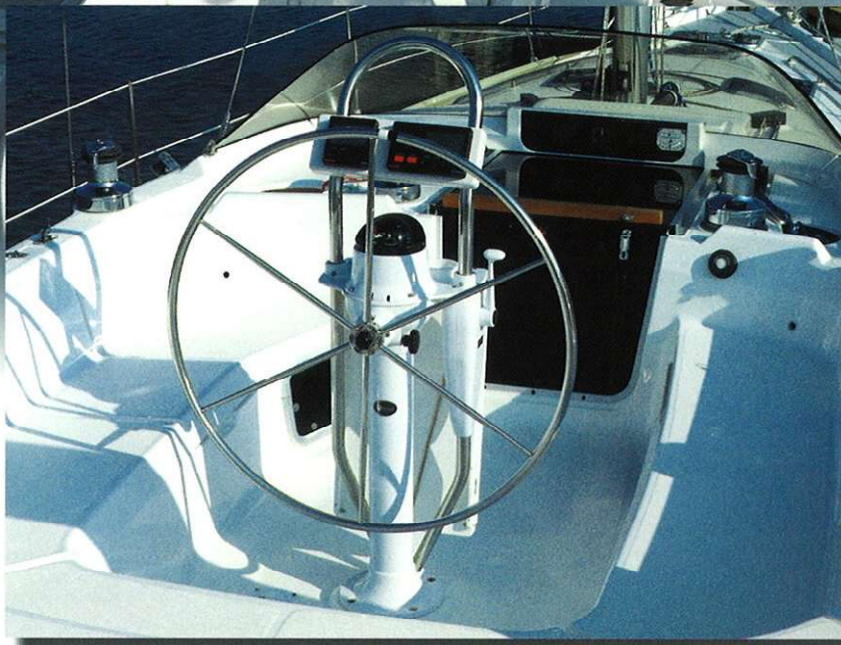
Accommodations are worth discovering, as the utilization of space is nothing short of incredible. The salon is full of natural light and ventilation is plentiful with screened hatches and ports. A u-shaped galley is situated perfectly for keeping the chef in the conversation and two private staterooms are fitted with innerspring mattresses and plenty of storage.

Come aboard and Discover the Difference for yourself. We know you'll be impressed!





The integrated arch is a great location for stereo speakers, lights and the overhead traveler, keeping the cockpit clear and safe. It also makes for a clean installation of the bimini. Your crew and guests alike will love the view from the sturdy, integrated taffrail seats.



- ▲ ABOVE — The 456 cockpit is wide and comfortable for sailing and entertaining. It features a Whitlock® mechanical steering system, fold-down table and plenty of storage.
- ▶ ABOVE RIGHT — Full-transom storage is easily accessible and can house a dinghy, outboard, and even a set of scuba tanks.
- ▶ BELOW RIGHT — Offset anchor rollers, a deep chainfall and under deck windlass make handling ground tackle a snap.

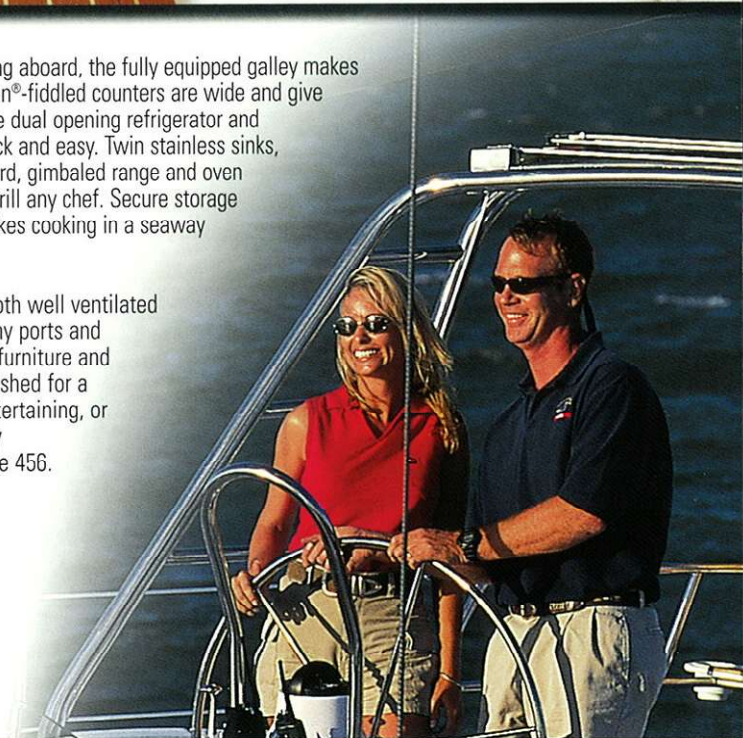






▲ Extended cruising or living aboard, the fully equipped galley makes it so easy. Genuine Corian®-fiddled counters are wide and give plenty of prep space. The dual opening refrigerator and freezer make access quick and easy. Twin stainless sinks, a convenient cutting board, gimballed range and oven plus a microwave will thrill any chef. Secure storage and non-slip flooring makes cooking in a seaway safe and easy.

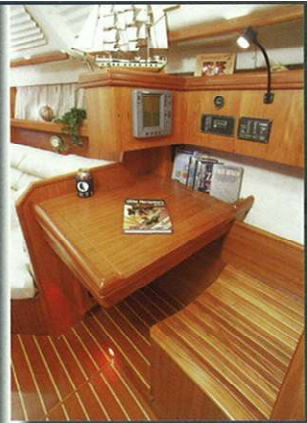
◀ The spacious salon is both well ventilated and well lit with its many ports and hatches. Beautiful teak furniture and bulkheads are finely finished for a custom look. Dining, entertaining, or just relaxing is all easily accomplished aboard the 456.





▲ The owner's suite offers superb accommodations in an expansive area. A standard queen-size, innerspring mattress adorns the master berth. Multiple hanging lockers, drawers and shelving will handle your liveaboard needs. The combination shower and bathtub lie behind the custom shower door and the desk/computer station is perfect for the mobile executive.

Forward, you'll find the guest stateroom with a full-size double berth and a full set of drawers and hanging lockers plus a private head with shower.



▲ The separate nav station provides storage for your charts and books and space for your navigational electronics.

▼ The combination tub and shower provides comfort and privacy for the owners.



SPECIFICATIONS

Length Overall	46'1"14.05 m	Sail Area (actual)	1,000 ft ²92.90 m ²
Hull Length	44'3"13.49 m	I	55'5"16.89 m
Waterline Length	39'8"12.09 m	J	16'11"5.16 m
Beam	14'0"4.27 m	P	49'11"15.22 m
Draft (Bulb-Wing)	5'6"1.68 m	E	16'10"5.13 m
Draft (Deep Keel)	6'6"1.98 m	Headroom	6'6"1.98 m
Displacement (Bulb-Wing)	26,000 lb11,794 kg	Fuel Capacity	100 gal378 L
Displacement (Deep Keel)	26,180 lb11,886 kg	Water Capacity	200 gal757 L
Ballast (Bulb-Wing)	9,500 lb4,309 kg	Holding Tank Capacity	50 gal190 L
Ballast (Deep Keel)	9,680 lb4,395 kg	Water Heater	11 gal42 l
Mast Height	63'0"19.20 m	Aux Power (Yanmar)	76 HP57 KW
		CE Classification	A

*All measurements are approximate.



Discover the Hunter Difference

Safety ▶ Appointments ▶ Innovations



1 **Finely Finished Teak Furniture and Bulkheads**

The new Hunter line features a varnished finish on beautifully detailed teak interiors. You will see curved radiuses, matched grains and a new higher level of fit and finish that is usually found only on custom boats.



2 **Upgraded Interior Hardware and Fixtures**

All interior hardware has undergone extensive testing and evaluation for strength, compatibility and longevity. All cabinetry and door hardware has been upgraded. You'll feel the difference!



3 **Upgraded Exterior Hardware**

All exterior hardware has been upgraded to include the biggest and best names in the business. You'll find names you can trust such as Lewmar®, Spinlock®, Harken®, ProFurl®, Whitlock® and Schaffer® aboard the new Hunter line.



CORIAN
SOLID SURFACES

4 **Genuine Corian® Countertops**

Genuine Corian® countertops are utilized throughout the entire Hunter keelboat line. This durable, yet beautiful material will hold its serviceability and luster for years to come.



5 **Heavy Duty Rubrails**

A new high-density vinyl rubrail is now being wrapped 360 degrees around the boats for added protection. A standard stainless steel insert also enhances the protection as well as the beauty.



6 **Hunter Kevlar® Technology**

Hunter adds the extra strength, but not the weight where you need it most. From the stem to the keel sump, Hunter has added a Kevlar® laminate to give you added protection against collisions. This is the most likely area for damage or penetration and Hunter provides an extra level of security.



7 **Stainless Steel Arches**

When Hunter first introduced the arch a few years ago, the skeptics were all against it. Today, many of those are now offering arches of their own. There is no question – the arch is a real asset. By placing the traveler up top, it keeps the cockpit clear and safe. As an attachment point for a bimini, it makes a clean installation. The arch is also perfect for stereo speakers and cockpit lights.

B&R Rigs

Again, another Hunter innovation that has now been time-proven to be one of the strongest and easiest to sail rigs ever designed. By incorporating sweptback spreaders and a pre-bend in the mast, the need for a backstay has been eliminated. This allows for a fuller roach main that provides more power in an easy to tame mainsail. With the big main, the jib can be smaller and easier to handle as well. Power without perspiration!

Antimonious Lead Keels

At Hunter Marine only real hardened lead keels are attached with stainless steel keelbolts. This is obviously more expensive than iron keels and mild steel bolts, but when it comes to performance, safety and maintenance, it's the only way to go.

Through-Bolted Hull to Deck Joints

Superb strength and integrity are achieved with a through-bolted hull to deck joint. The outward turned flanges of the deck and hull are first shaped for an exact fit. Then, 3M 5200 sealant is evenly spread onto the joint prior to the lowering of the deck. The joint is then clamped together and through-bolted around the entire deck. An extra shot of epoxy is also laid down at the chainplates. Now, that's strength!

Extensive Dealer Network

No matter where in the world you decide to purchase and cruise your Hunter sailboat, our extensive dealer network is trained to be responsive to your needs. An exclusive dealer intranet is in place to keep us in constant communication with them. Whether you need a small part sent or a large question answered, we are always online. As we continue to expand both our product line and distribution channels, you can be sure we will be there for you.

Modular Interior Construction

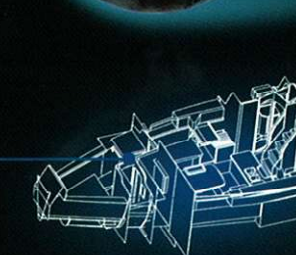
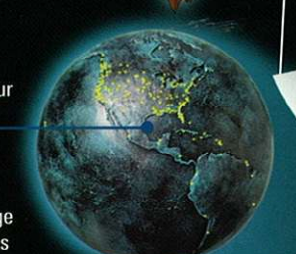
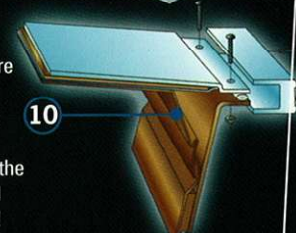
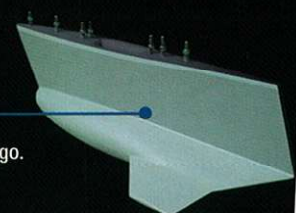
By building the interior outside the boat, Hunter can reduce labor costs and increase quality because of excellent accessibility. The interior is then bonded into the hull to make a true unibody structure.

MaxGuard™ and Microban® Gelcoats

Hunter decks are built with MaxGuard gelcoat. This eliminates any yellowing and reduces crazing and fading. Heads and showers are laminated with Microban, a special antibacterial gelcoat to protect you and your family. They cost us a bit more, but it's worth it!

Upscale Entertainment Systems

Hunter now offers flat screen TVs and Bose® audio systems. Some competitors believe "roughing it is all right", but at Hunter we believe your comfort is more important. Enjoy the best in video and audio — you deserve it!



SHARP

BOSE

STANDARDS AND OPTIONS

Hunter Cruise PAC®

While everyone else was complaining about the high cost of marine hardware and accessories, Hunter was doing something about it. The Hunter Cruise Pac® was developed to make all the accessories and hardware you need standard equipment. We buy top-quality gear in very large quantities. The result? Equally large savings. The Hunter Cruise Pac® isn't just sails, winches, and running rigging – it's things like galley appliances, anchors, fire extinguishers, running lights, life jackets – even a copy of US Sailing's *Basic Cruising Manual*. We invite you to compare the Standard Equipment list below with that of any other manufacturer. You'll discover that Hunter is making the difference for you with more – and better gear. For less.

RIGGING

Anodized B&R Double Spreader
Mast Head Rig — Selden®
Boom Vang
Dual Single Line Reefs Led Aft
(1) Electric Self-Tailing Halyard Winch
Full Roach Main w/Flaking System
Furling System w/110% Furling Jib
Harken® Adjustable Mainsheet Traveler
Inboard Jib Tracks w/Cars
Internal Halyards Led to Cockpit
Mainsail Batten Cars
Mast Steps
Mast Struts
Sail Cover
(8) Sheet Stoppers
(1) Two-Speed Rigging Winch
(2) Two-Speed Self-Tailing Jib Sheet
Winches
Windex® Wind Indicator

DECK/HULL

Balanced Spade Rudder
w/Composite Shaft
Bow, Midship and Aft Mooring Cleats
Bronze Seacocks on Thru-Hulls
Under Waterline
Cabin Windshield w/Cover
Continuous 360 Degree Rubrail
w/Stainless Steel Insert
Cored Hull Sides
Dual Offset Anchor Rollers
(2) Dorade Type Vents
Dockside Freshwater Hook-Up
Double Life Lines w/Three Gates
Electric Anchor Windlass
External Lead Keel
(4) Fixed Hull Ports
Hot & Cold Pressure Transom Shower
Integral Fender Racks
(2) Large Transom Lockers
LPG Storage For 2 - 10 lb. Bottles
Molded-In Two Tone Non-Skid Deck
One-Piece Hull
(12) Opening Ports w/Screens
(6) Opening Deck Hatches w/Screens
and Shades
Port & Starboard Aft Sundeck Cushions
Split Anchor Well for Rode and Chain
Stainless Steel Arch w/Mainsheet
Stainless Steel Bow and Stern Pulpits
Stern Pulpit Seats w/Drink Holders
Stainless Cabin Handrails
Swim Platform w/Stainless
Telescoping Ladder

COCKPIT

(2) Coaming Lockers
Folding Cockpit Table
Line Storage Wells
Manual Bilge Pump
Pedestal Wheel Steering w/Mechanical
Linkage, Single Lever Engine Control,
Wheel Brake, Lighted Compass and
Pedestal Guard

FORWARD CABIN

Bedding Package w/Fitted Sheets
Custom Curtains
(6) Dresser Drawers Under Berth
Double Berth
Large Hanging Locker
Sealed Teak and Holly Sole
7" Thick Innerspring Mattress
6'5" Walk-Through Headroom

FORWARD HEAD

Full Head w/Shower
Holding Tank w/Macerator
Vanity w/Corian® Countertop

MAIN SALON

Convertible High-Gloss Dinette Table
Convertible Table at Port Settee
Custom Curtains
Dinette Converts to Double Berth
6'11" Headroom
Interior Plush Fiber Blend 6"
Comfort Back Cushions
Large Cedar-Lined Hanging Locker
Large Salon Ports
Navigation Station w/Contoured
Teak Seat and Space For Electronics
Ottoman for Dinette Seating
Port and Starboard Teak Handrails
Sealed Teak and Holly Sole
Storage Lockers on Hull Sides

AFT CABIN

Bedding Package w/Fitted Sheets
Book Rack
40 Cubic Foot Hanging Locker
Decor Headboard w/Lamps
Desk/Computer Table w/Lounge Seat
6'5" Headroom at Foot of Berth
(8) Opening Ports and One Hatch
Overhead Handrails
Queen-Size Berth
Sealed Teak and Holly Sole
Starboard Side Storage System
Teak Footboard
7" Thick Innerspring Mattress

AFT HEAD

Full Head w/Shower and Tub
Holding Tank w/Macerator
Vanity w/Corian® Countertop

GALLEY

Built-In Waste Bin
Corian® Countertops
Corian® Spice Rack
Double Stainless Sinks w/Cutting Board
Everlast Solarium® Vinyl Flooring
Hot/Cold Pressure Water System
LPG 3 Burner Gimballed Stove w/Oven
Microwave
(6) Plates, Bowls & Mugs
Storage Cabinets and Drawers
Top and Front Loading Refrigerator
w/Separate Freezer – Both Lighted

ELECTRICAL

Built-In Solar Panel on Sea Hood
Cabin Reading Lights
Dockside Power w/Cord
Electric Automatic Bilge Pump
(1) Engine Starting Battery w/Box
Gauges – Fuel, Water, & Holding Tank
(2) 4D House Batteries w/Boxes
Inverter/Battery Charger (100 amp)
Running Lights w/Steaming, Deck
and Anchor Lights
(2) Shower Sump Pumps
12 Volt Battery Switch

ELECTRONICS

AM/FM/CD Player w/8 Speakers and
Power Booster
Raymarine® Digital Knotmeter w/Log
Raymarine® Digital Depthsounder
w/Alarm
TV/VCP (12 volt), U.S. Only
VHF Radio w/Stainless Antenna

CAPACITIES

100 Gallon Fuel Tank (387L)
11 Gallon Hot Water Heater (42L)
50 Gallon Waste Tank (190L)
200 Gallon Water Tank (750L)

GENERAL SAFETY GROUP

Danforth-Type Anchor and Rode
■ Fog Bell
■ Hand-Held Flares
■ (6) Life Jackets
Emergency Tiller
■ (2) Fire Extinguishers
U.S. Sailing's *Basic Cruising Manual*
■ – U.S. Only

OPTIONAL EQUIPMENT

Aft Vanity w/Corian® Countertop
in Lieu of Port Hanging Locker
Air Conditioning System
Alternator Upgrade – 105 amp
Bimini Top – Sunbrella®
Bow Thruster
Cockpit Cushions – White Sunsure®
Cockpit Stereo System
Cruising Spinnaker Gear
Dodger Canvas
Dresser Drawer/Night Table Stand
in Lieu of Desk & Lounge Seat
Dynaplate
EcoFlush® System (2 heads)
Generator
In-Mast Furling System
Inner Forestay w/Chainplate
Leather Interior Cushions
Raised Cockpit Windshield w/Grab Rail
Raymarine® Autopilot
Raymarine® GPS
Raymarine® Pathfinder® Radar/Plotter
Raymarine® Pathfinder® Color Radar/ Plotter
Raymarine® ST 80 System – Basic Pkg.
Raymarine® ST 80 System – Premiere Pkg.
Raymarine® Wind Machine
Spinnaker Winches
Stateroom 10" Flat Screen TV w/DVD
Stateroom Stereo System
Tri-Cabin Option
VHF Remote at Helm
Washer/Dryer
Watermaker – 8 gph
42" Wheel
ENGINE
Freshwater-cooled diesel –
76 HP standard
Hinging fiberglass cover for easy access



HUNTER
MARINE CORPORATION
AN EMPLOYEE OWNERSHIP COMPANY
DISCOVER THE DIFFERENCE

Route 441 • Post Office Box 1030 • Alachua, Florida USA 32615
Phone (386) 462-3077 • FAX (386) 462-4077 • NATIONAL CUSTOMER HOTLINE U.S. 1-800-771-5556
www.huntermarine.com • e-mail: sales@huntermarine.com • customerservice@huntermarine.com

Hunter Marine reserves the right to modify or change, without notice, any materials, specifications, equipment and/or accessories. All measurements are approximate. Standard equipment may vary for products sold outside the United States.

 Marine Industry Certified Manufacturer

 Certification Available

 Certified by National Marine Manufacturers' Association