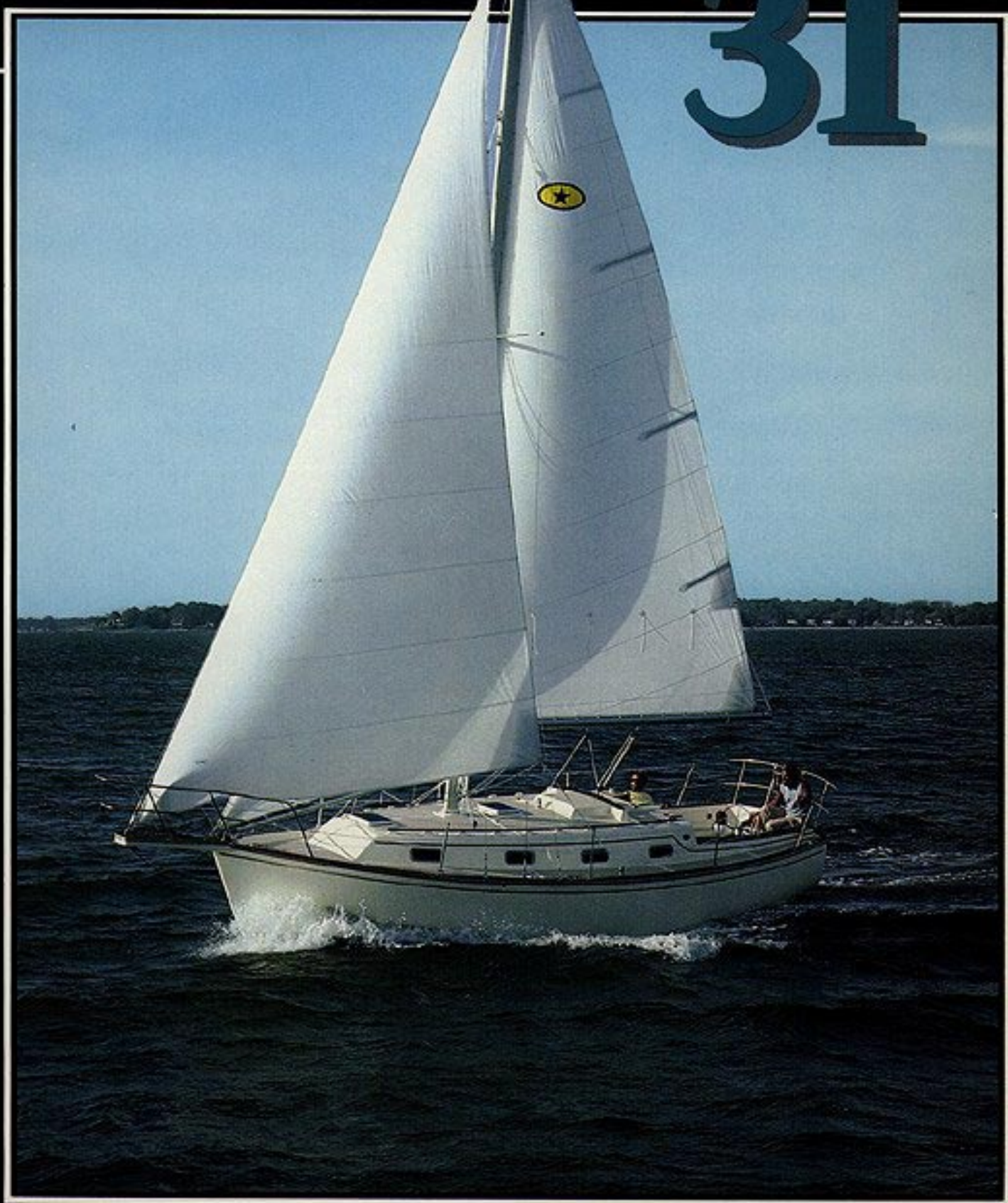


ISLAND PACKET®

31





Distinctly in a Class by Itself...

Since its introduction, the new Island Packet 31 has quickly established itself as an emerging cruising classic. Featuring the highly successful and acclaimed Island Packet design concept that combines a broad beam, modern full keel hull with handsome traditional styling and a generous yet easily managed rig, the Island Packet 31 offers today's cruising sailor the unique advantages of spirited performance with excellent control and seakeeping qualities, combined with spacious accommodations normally found only in much longer yachts. Free of rating rule design aberrations, *all around* sailing excellence has been achieved with easy handling by a small crew, combined with exceptional comfort and safety features insuring maximum enjoyment at sea and at anchor. And a moderate (or optional shoal) draft design gives the full capability for blue water passages as well as exploring shallow coastal waters.

Topside, the Island Packet 31 features large, unobstructed deck and cabin top surfaces ideal for sunning, sail handling, or on-deck storage. The bowsprit platform is equipped with an anchor roller

and deck pipe to the divided forepeak, allowing ground tackle to be easily retrieved and stored, *always* ready for immediate use. Safe and secure deck work is ensured with raised bulwarks, premium coarse diamond nonskid, full length cabin top handrails, welded double bow and stern rails and double lifelines.

The roomy cockpit is over 7 feet long and can seat eight adults in comfort. It features contoured seats with deep coaming backrests, a watertight hinged sole hatch for access to the fully insulated engine compartment, large seat lockers, cockpit ice box, coaming storage bins, rack and pinion geared wheel steering for precise feel and utmost reliability, a comfortable helmsman

seat, pedestal mounted compass, and a single lever engine control mounted adjacent to the helm. A raised bridge deck and large scuppers provide security in wet going, plus mid-boom sheeting allows unrestricted dodger and bimini installations.

The deck is trimmed with a wide teak cap rail with s/s striker all around, with teak cockpit coamings and detail trim. All nonskid surfaces are molded in a contrasting tan.



The broad beam design and innovative tri-cabin layout afford an exceptional amount of room and *livability*, allowing for a variety of guest accommodations with privacy and comfort. The forward cabin has a large vee berth with removable filler cushion, hanging locker, several cabinets, shelves and lockers, plus its own doors to both the head compartment and main salon for privacy and convenience.

The large head compartment features a deluxe vanity with cabinets over and under, linen cabinet, teak framed mirror (unbreakable), and a draining fiberglass shower pan. Pressure water including a shower with seat and curtain further add to comfort aboard.

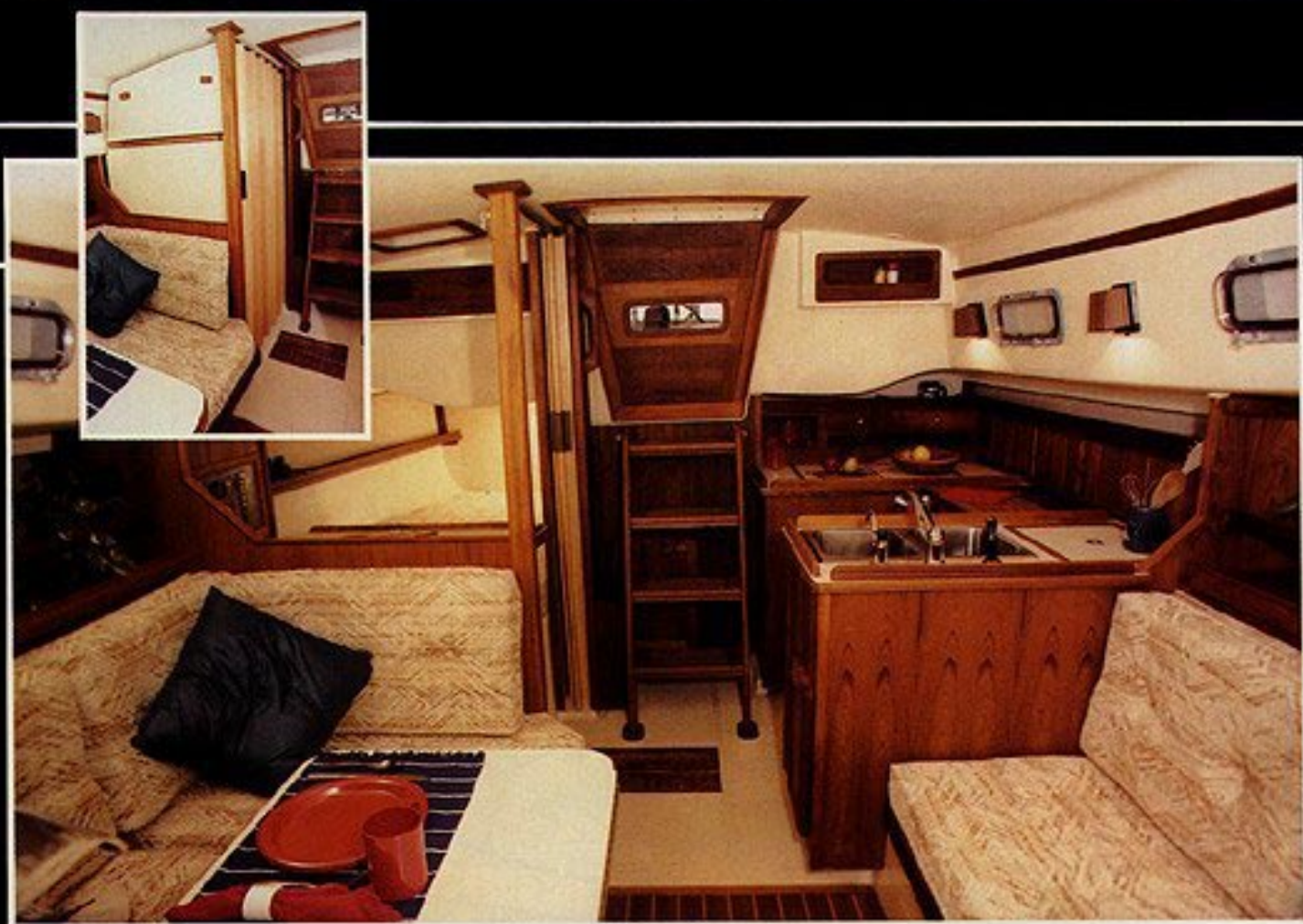
The spacious main salon will comfortably seat a group for dining, or with table folded against the bulkhead rack, offers an inviting social atmosphere with large facing settees and wide cabin sole. A pull-out berth is built into the L-shaped settee for extra guest accommodations. A hanging locker is provided forward, and the settee berths have cabinets and book shelves

outboard, with additional storage areas under and behind the cushions.

With a flip of the chart table and a pull on the folding pocket door, the unique quarter berth/nav station area quickly becomes an enclosed quarter cabin, offering the advantages of an open spacious interior by day and private cabin by night. A cabinet adjacent to the chart table houses the master electrical panel with room for additional nav/electronic equipment. Also, a cabin back enclosure with hinged access door is provided for convenient access to deck mounted instruments. Ample ventilation and light are provided for this area, open or enclosed, from an overhead hatch and two opening ports, with one in the footwell side providing flow-thru ventilation.

The U-shaped galley is convenient to both salon and





cockpit, yet out of traffic. Equipped to satisfy the most demanding cook, standard features include a large (11 cubic foot), heavily insulated ice box with shelf and divider, 2-burner gimbaled range with oven and cutting board top, deep double sinks, large dish rack with cutlery drawers, dry storage bin and numerous cabinets. Both pressure and manual water taps are provided, plus details such as a stove guard rail with harness attachments, and tilt-out trash receptacle make onboard cooking safe and practical.

Hand rubbed oiled teak bulkheads, trim, and teak and holly sole, combined with coordinated designer fabrics and surfaces impart a feeling of luxury and warmth below. Excellent natural light and ventilation are provided by three overhead hatches, nine opening ports, and louvered interior doors. Hanging lockers are cedar lined for freshness. Details such as a companionway grate with lift-out dust pan and overhead handrails further add to comfort and safety below.

The modern, moderate displacement U-shaped hull form with long waterline, broad waterline beam, and 40% ballast ratio combined with ample sail area make the Island Packet 31 an exceptionally powerful, stiff yacht that performs extremely well in light air or heavy. In addition, the foil section cutaway full keel gives the cruising sailor many advantages, namely the virtues of moderate draft with excellent windward performance, controlled responsive steering with "hands off" tracking,

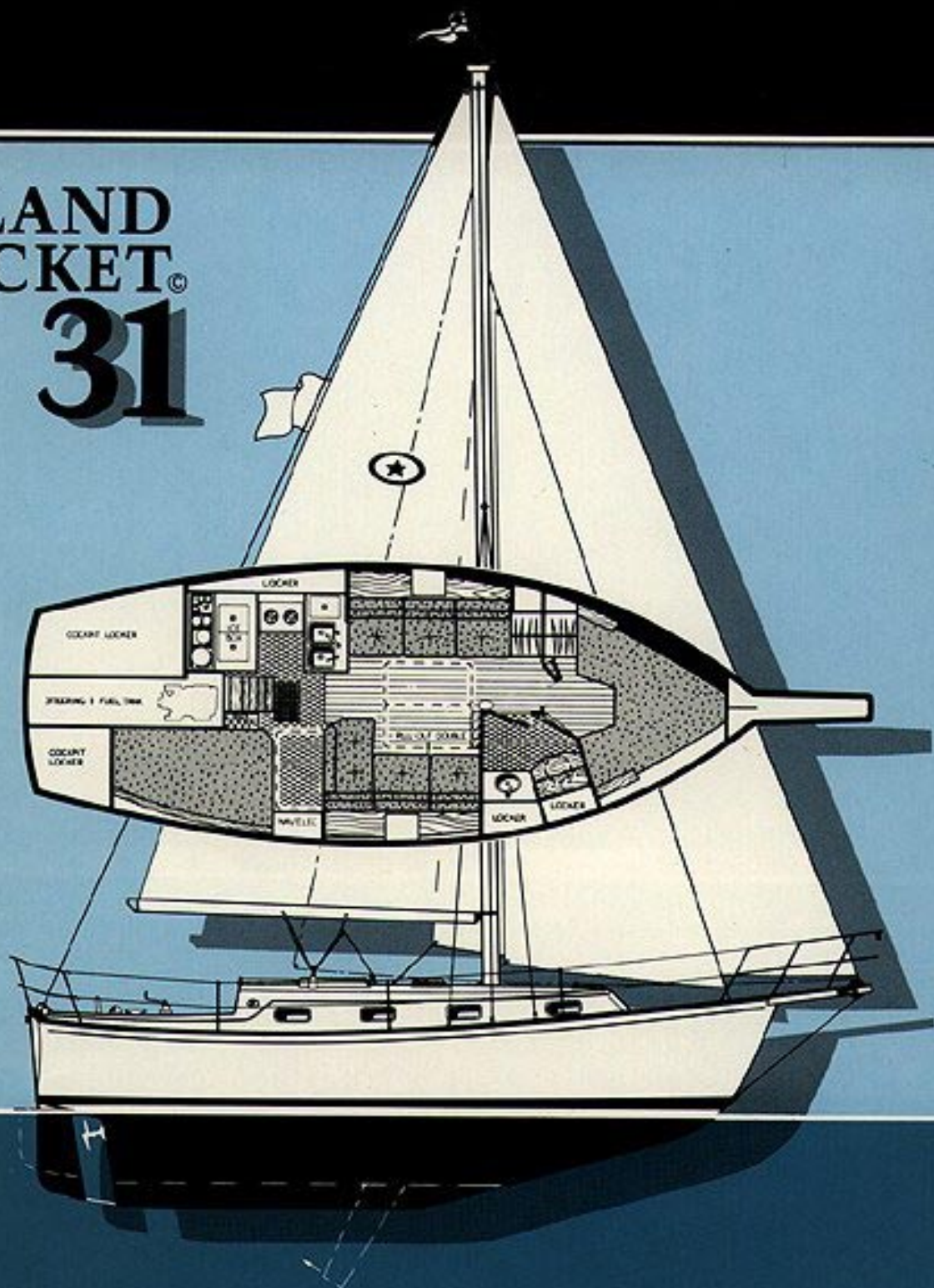
superior protection from submerged objects and debris, and an inherently strong and worry free integrally molded attachment structure.

Standard equipment is unusually complete, ranging from sails, 115V A-C shore power, hot water, wheel steering, and engine fresh water cooling to such detail refinements as an electric fuel gauge, dual fuel pumps and filters (with water trap), spring line cleats, companionway board storage rack, engine room light, and pre-wired radio antenna cable.

Extensive yacht building skill, rigid manufacturing controls, thorough engineering and design, and select materials and equipment make the Island Packet 31 one of the finest yachts available today. Outstanding craftsmanship is visible inside and out in exceptional woodwork, superb fiberglass moldings, and meticulous mechanical and electrical systems. Construction features such as all hand laid glass work utilizing advanced materials, through bolted hull-to-deck joint with lock nuts, and an engineered interior grid structure unified with the hull combine to produce a yacht of immense strength with moderate weight.

All of these factors combine to make a statement as much about our commitment to excellence and our extensive knowledge as about your standards, your taste, and your appreciation of quality, putting the Island Packet 31 and its growing roster of owners distinctly in a class by themselves.

ISLAND PACKET® 31



SPECIFICATIONS

LOA	34'4"
LOD	30'7"
LWL	27'9"
DRAFT: KEEL	4'0"
K/CB	3'0"/7'0"

BEAM	11'6"
DISPL. (Approx.)	11,000 lbs.
BALLAST	4,500 lbs.
SAIL AREA (100% F.T.)	531 S.F.
AUXILIARY	FWC 27hp D.

CABINS/BERTHS	3/7
HEADROOM	6'3"
MAST ABOVE DWL	43'6"
FUEL	25 gal.
WATER	70 gal.

Designer: Robert K. Johnson, N.A.

The Island Packet Concept

Key features that add up to be your best choice for a cruising yacht.

Twin backstays for easy stern boarding, unobstructed helm.

Entire rig and all underwater metals electrically bonded.

All fiberglass 100% hand laid with ISO/NPG type gel coats for maximum durability. Deck laminate cored with advanced Polycel® - a tough glass microsphere and resin matrix that is heat, rot, and delamination proof.

Deck attached to integrally molded hull flange with bolts, lock nuts, and urethane adhesive sealant.

Hull molded in one piece of extra strong triaxial glass, unified with an engineered interior grid structure for immense strength, moderate weight.

Powerful broad beam, long waterline hull form with modern U-shaped sections for stability, speed.

Balanced foil section rudder with premium rack and pinion steering for precise feel, fingertip control, utmost reliability. Well supported and protected rudder and propeller.

Masthead rig for maximum sail area, upwind performance, easy tuning.

Large mainsail provides off-wind performance without need of spinnaker or special reaching sails.

Optional staysail gives maximum sail versatility; can be used with standard overlapping jibs for increased performance.

Chainplates imbedded and interlocked directly into hull structure.

Deck hardware through bolted with aluminum backup plates, lock nuts.

Wide recessed foredeck and side decks with bulwarks for safe footing.

Bowsprit provides increased sail area, close sheeting angles, plus handy anchor stowage always ready for immediate use.

Raised, flared topsides forward lift to steep seas, keep decks dry.

Fine entry for clean flow, low drag.

Cut-away forefoot for responsive steering; swept-back leading edge deflects instead of impacts.

Modern Full Keel Advantages

- Hands off tracking, superior seakeeping qualities
- Moderate draft with excellent windward performance
- Foil shape keel for increased lift, reduced drag
- Strong, integrally molded keel and hull structure
- Encapsulated internal ballast - no bolts to loosen or leak
- Great stability - high ballast ratio and low c.g. equal to deeper fin keel
- Large keel sump contains any bilge water, keeps interior dry



ISLAND PACKET YACHTS®

Modern Yachts in the Finest Tradition

1979 Wild Acres Road • Largo, Florida 34641 • (813) 535-6431

Dealer: