



## 2005 Aicon

64' - NXTLVL

Stepping aboard this Aicon at the euro transom just above the waterline, the aft deck is accessed from port or starboard. Crew quarters accessed centerline. Once, onto the aft deck, you'll notice the large Teak dining table with upholstered beach seating and moveable chairs. Access the main salon t

- Power - Used - Motor Yachts
- Diesel Fuel
- Fiberglass Hull
- Florida United States

Tax Paid

Vessel ID# 2784592

\$599,000 USD  
 €534,136 Euros \$758,783 CAD

## Description

---

Stepping aboard this Aicon at the euro transom just above the waterline, the aft deck is accessed from port or starboard. Crew quarters accessed centerline. Once, onto the aft deck, you'll notice the large Teak dining table with upholstered bench seating.

Access the main salon through Aicon's curved glass stainless steel framed sliding doors a sign of the quality craftsmanship you'll find throughout this yacht. The large sweeping windows furnish the salon with excellent views of the water and sunlight. Stepping up one level to the dining and galley area. Teak table, fixed leather seating, and moveable chairs. Positioned to starboard is one of the finest galleys available on any yacht of this size. Located perfectly to deliver the finest views onboard while making good use of the Island prep area, stainless steel countertops, and built-in dishwasher for easy cleanup. Side decks are quickly accessed through the galleys electric starboard side deck door. The lower helm is located forward to port positioned for excellent visibility while cruising indoors from custom twin leather captain's chairs. Centerline, down four steps, leads to the VIP stateroom boasting 7ft of headroom, a queen-sized berth, plenty of storage, and en-suite head. Moving aft and to starboard the guest stateroom dual single berths and en-suite head. Moving further aft amidships is the full-beam master stateroom. The centerline Queen-sized bed is positioned perfectly to enjoy excellent views either side though Aicon's signature 24inch circular windows. To portside, is the gem of the 3 stateroom layout, the spacious master head with custom rain shower, raised porcelain sink, and head. While to starboard the large walk-in closet is unique to this layout.

## Data Sheet

---

Category: Motor Yachts  
 Type: Power - Used  
 Year: 2005  
 LOA: 66' 11" (20.40 meters)  
 Draft Max: 4' 11"  
 Cabins: 3  
 Sleeps: 6  
 Head Room: 6' 7"  
 Heads: 3

Maximum Speed: 31  
 Cruise Speed: 26  
 Fuel Type: Diesel  
 Hull Material: Fiberglass

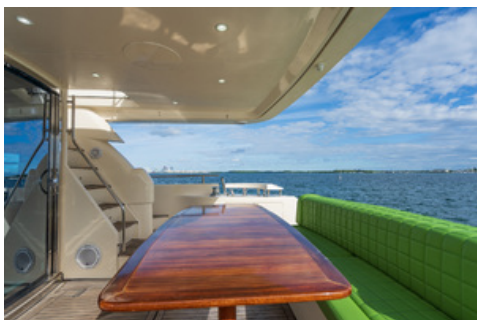
Dry Weight: 78044  
 Bow Thruster: Yes  
 Fuel Tank: 898 Gallons (3399.3 Liters)  
 Fresh Water: 264 Gallons (999.35 Liters)  
 HIN/IMO: ACNC0011H405

## Featured Images

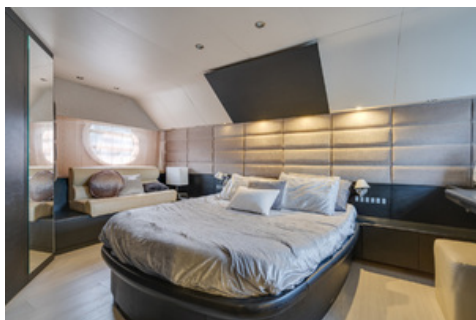
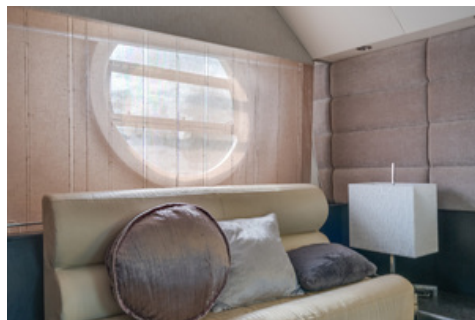
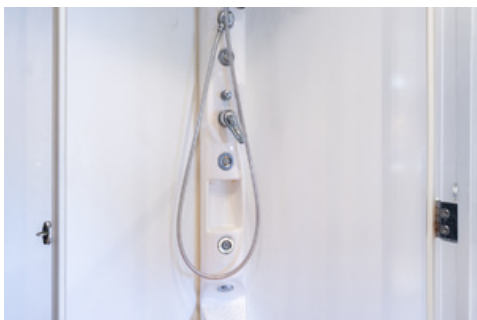
---

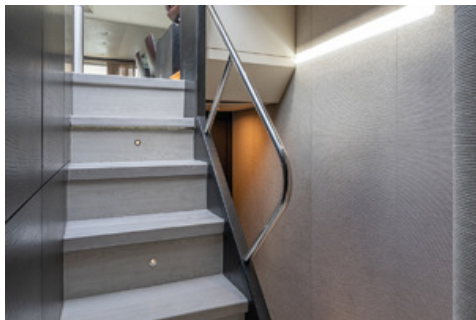












## Engines

### Engine 1

- Engine Make: Mercedes
- Engine Model: MTU
- Engine Year: 2005

### Engine 2

- Engine Make: Mercedes
- Engine Model: MTU
- Engine Year: 2005

- Engine Type: Inboard
- Power HP: 1250.00
- Power KW: 0.00
- Fuel Type: Diesel
- Engine Location: Port

- Engine Type: Inboard
- Power HP: 1250.00
- Power KW: 0.00
- Fuel Type: Diesel
- Engine Location: Starboard

## Full Details

### Recent work

- A/C fully serviced October 2021
- New Mercedes MTU Throttle controls being replaced (30k in work)
- Full 3 stage detailing done October 2021
- Zincs, transom, shafts and bottom done March 2021
- New batteries June 2021
- All new injectors replaced June 2021
- New windlass chain June 2021
- New Bimini Top, and upholstery replaced May 2021
- Raw and Grey water pump replaced April 2021
- Stbd Alternator replaced March 2021
- Bow thruster replaced March 2021
- Generator fully serviced and necessary hoses changed March 2021
- (Over \$100,000 of work done in the last year)

## CONTACT BROKER



### 26 North Yachts

2525 Marina Bay Drive West  
 Suite 203A  
 Fort Lauderdale FL 33312 USA  
 Phone: 1-954-900-9988  
 Fax: 1-954-206-3075  
<https://www.26northyachts.com>



### Jesse Fortin

Email: [jesse@26northyachts.com](mailto:jesse@26northyachts.com)

© 2022 International Yacht Brokers Association - Jesse Fortin, Active Member - Vessel ID: 2784592