

# HOSPITALITY



THE INTERNATIONAL YACHT COMPANY













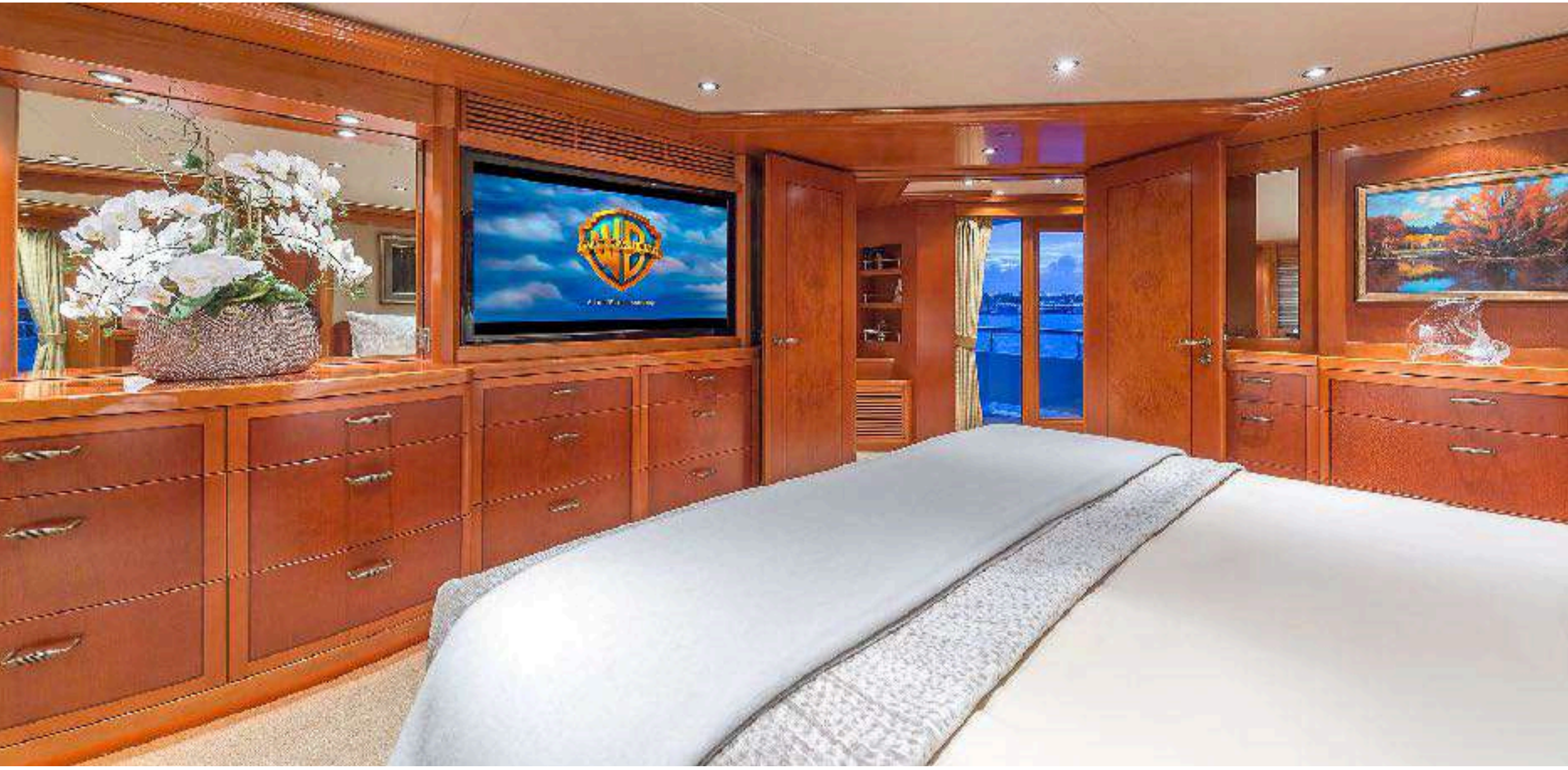














HOSPITALITY



MASTER STATEROOM PRIVATE BALCONY





HOSPITALITY



MAIN DECK VIP & LARGE ENSUITE

























HOSPITALITY



LOWER DECK CONVERTIBLE GYM WITH ENSUITE





















# KEY FEATURES

- ▶ Brand new 2020 highly sought after Freeman 42LR towed tender
- ▶ Private owner's suite on upper deck with private balcony
- ▶ Excellent selection of water toys including e-foil, flyboard, waterslide, seabobs, SUPs and more
- ▶ VIP Cabin on Main Deck with large marble-clad ensuite
- ▶ Full gym with state of the art equipment, single bed and pullman
- ▶ 7 staterooms offer flexible accommodations + library that converts to spa/ massage room
- ▶ Updated interior and exterior in 2019
- ▶ Vast exterior deck spaces great for entertaining



HOSPITALITY





# TENDERS & WATER TOYS

New in 2020:

- ▶ Freeman 42LR Towed Tender
- ▶ 1x E-foil
- ▶ 1x Jet Surf Adventure DFI Plus
- ▶ 3x Waverunners - Sea-Doo GTX 300 Limited
- ▶ 1x Yamaha FX Cruiser SVHO
- ▶ 1x Inflatable tender - Brig 17ft on the bow with 80hp outboard engine
- ▶ 2x Seabobs - Seabob
- ▶ 1x Flyboard - Zapata
- ▶ 1x Slide
- ▶ 4x NautiBouy platforms
- ▶ 2x Skurfboards - Bonzai models
- ▶ 1x Wakeboard (Mens) - Hyperlite
- ▶ 1x Wakeboard (Womens) - Hyperlite
- ▶ 1x Wakeskate - Ronix
- ▶ 1x Waterskis - Obrien
- ▶ 2x Solid Paddle Boards - SUP
- ▶ 2x Inflatable Paddle Boards - Aero Bote
- ▶ 1x Rockin Marble inflatable tube - Sportsstuff
- ▶ 1x inflatable tube - Airhead Revolution
- ▶ 1x Kite - Prism
- ▶ 1x Kitesurf Training Kite - Ozone
- ▶ 20x snorkel sets - Cressi & Ozone
- ▶ 1x Badminton set - Carlton
- ▶ 1x Volleyball set - Sportscraft
- ▶ 1x Basketball - Spurling
- ▶ 1x Soccer ball - Nike
- ▶ 2x Rugby Balls
- ▶ 1x Frisbee

**WATCH THE VIDEO OF THE NEW  
TENDER 2020 FREEMAN 42LR**

HOSPITALITY

IXC





# SPECIFICATIONS

Accommodates	12 Guests in 7 Staterooms
Bed Configuration	2 Pullman, 4 King, 1 Double, 4 Single
Length	164' 1" (50m)
Beam	30' 10" (9.40m)
Draft	7' 10" (2.40m)
Year / Refit	2011 / 2019
Builder	Westport
Interior Designer	Donald Starkey
Engines	2 x MTU 16V 4000 M90 2 x Northern Lights M1066T, 99 kW - 1
Cruising Speed	14.5 knots
Max Speed	24 knots
Range	4,000 nm
GRT	492





# GENERAL ARRANGEMENT

## BRIDGE DECK

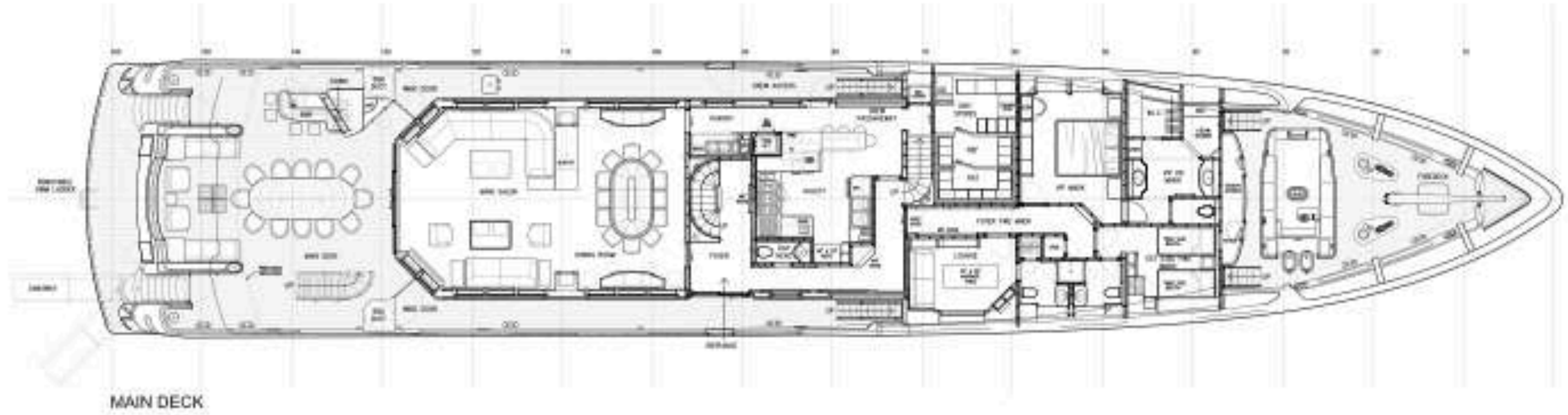
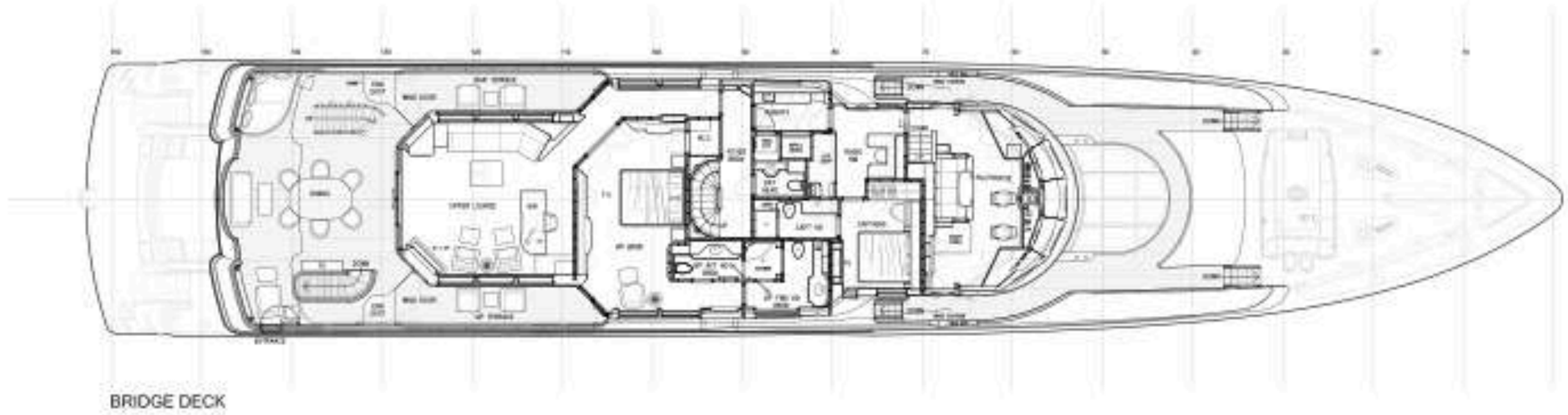
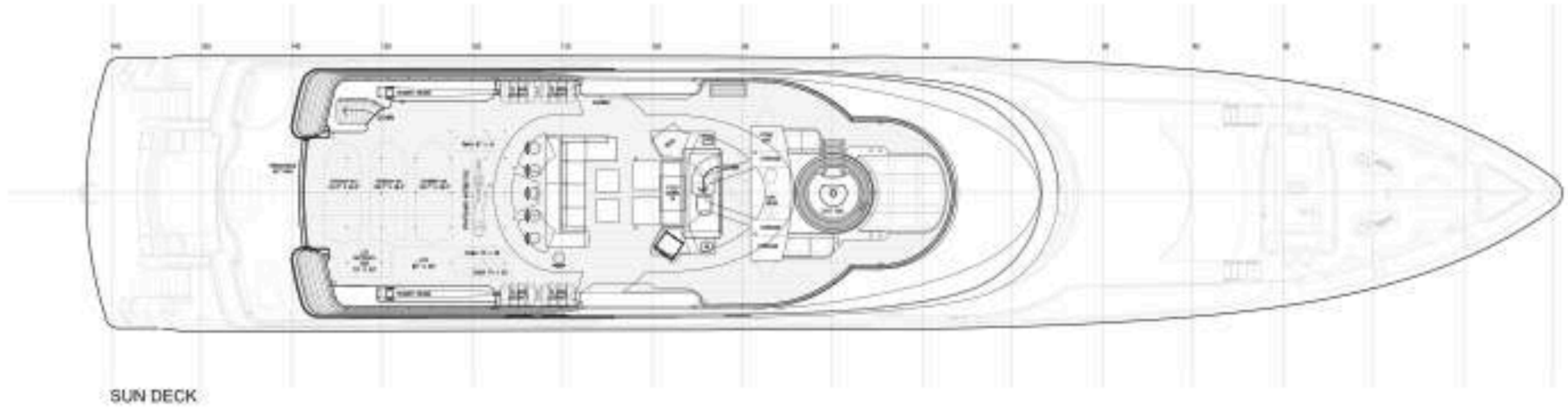
- Master Stateroom - 1 King

## MAIN DECK

- VIP - 1 King
- Twin - 2 Singles

## LOWER DECK

- VIP Port side - 1 King
- VIP Starboard side - 1 King
- Double - 1 Double, 1 Single, 1 Pullman
- Gym - 1 single, 1 pullman







L U X U R Y   C H A R T E R   Y A C H T S

email: [charter@iyc.com](mailto:charter@iyc.com) | call: +1 (954) 522-2323

IYC.COM