



## 2007 Aicon

### 64' 64 - Dopamine

The Aicon 64 has a swept-wing profile and elliptical windows that are very European, yet she has the open layout that is attractive to the American customers. She features 4 generous staterooms including a full beam master plus crew accommodations for 2. She is available in South Florida.

- Power - Used - Motor Yachts
- Diesel Fuel
- Fiberglass Hull
- Miami Florida United States

Vessel ID# 2772569

**\$575,000 USD**

€524,628 Euros \$802,318 CAD

#### FEATURES:

⚓ Full beam owner's cabin

⚓ Bimini top

⚓ Passerelle

⚓ Watermaker

⚓ High gloss cherry interior

## Data Sheet

Category: Motor Yachts  
Type: Power - Used  
Year: 2007  
Beam: 17' 4"  
LOA: 64' " (19.51 meters)  
Draft Max: 4' 3"  
Cabins: 4  
Sleeps: 8  
Heads: 3

Crew Cabins: 1  
Crew Sleeps: 2  
Maximum Speed: 34 Knots  
Cruise Speed: 23 Knots  
Fuel Type: Diesel  
Hull Material: Fiberglass

Displacement: 78044 lbs  
Fuel Tank: 898 Gallons (3399.3 Liters)  
Fresh Water: 264 Gallons (999.35 Liters)

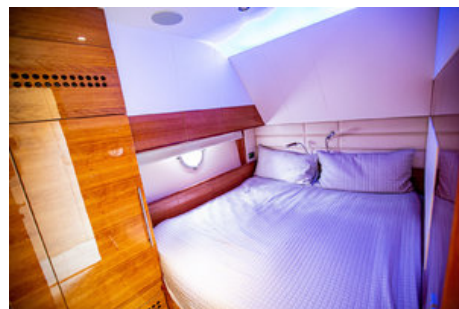
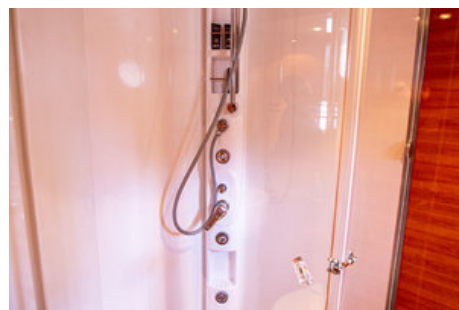
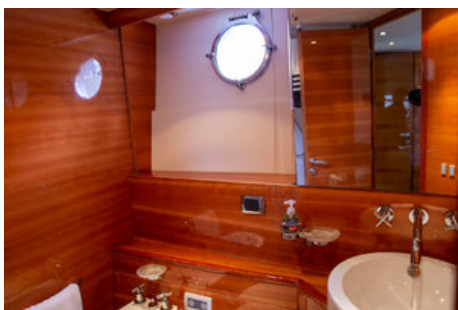
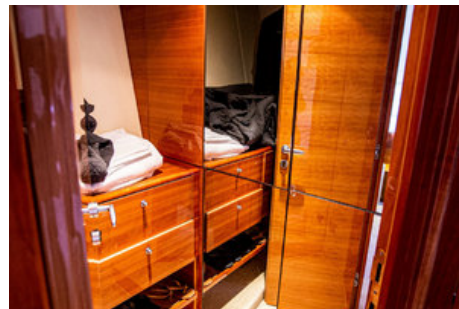
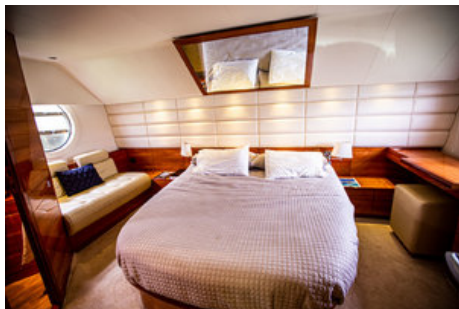
## Featured Images

---



**Profile**

---









## Engines

### Engine 1

- Engine Make: MAN
- Engine Model: DE2842LE443 12 Cyl.
- Engine Type: Inboard
- Drive: Direct
- Power HP: 1200.00
- Power KW: 900.00
- Fuel Type: Diesel

### Engine 2

- Engine Make: MAN
- Engine Model: DE2842LE443 12 Cyl.
- Engine Type: Inboard
- Drive: Direct
- Power HP: 1200.00
- Power KW: 900.00
- Fuel Type: Diesel

# Full Details

---

## Interior

This 64 Aicon features an open layout with a minimalist theme. Bolster-style leather seating is complemented with accents such as frosted glass, stainless steel, cherry wood and hardwood sole dressed with a custom area rug. The galley is open to the helm and dining area, making it easy to cook and entertain simultaneously.

The interior helm has leather seating for two with vent windows and a door to the starboard side deck for easy access. Below deck features a 4 Stateroom/3 head layout. The Master Stateroom extends full beam and has large, round hull side windows that allow natural light to infiltrate the space. Aft of the machinery space are crew quarters for 2 and a crew head.

### ***Salon:***

- Oak plank sole
- Leather sofas to port and starboard
- Curved, expansive side windows
- High gloss cherry interior

### ***Galley:***

- Four burner cook top
- Dishwasher
- Microwave
- Stainless prep table
- Plentiful storage
- Low profile island
- Isotherm Refrigerator/Freezer
- Isotherm Ice Maker

### ***Master:***

- Full beam. 6'8" headroom
- Low profile king berth
- 2 Nemo portholes which open
- Walk-in closet
- Large drawers
- En suite head with stand up shower and seating for 2

### ***VIP:***

- Step up Queen berth
- En suite head
- 7' headroom
- 2 closets

### ***Guest Stateroom 1:***

- Double Berth
- Closet
- Access to Guest head

### ***Guest Stateroom 2:***

- Over/under berths
- Closet

## **Exterior**

### **Aft Deck:**

- Teak sole
- Built in bench style seating with table
- Cover for table
- Passerelle
- Stairs to flybridge
- Hydraulic swim platform designed to carry 1,000 pound tender
- Stainless steel cockpit sliding door

### **Flybridge**

- Teak Sole
- Wet Bar
- Refrigerator and icemaker
- Built in grill and freezer
- Helm with companion seating
- U-shaped seating with table
- Foredeck Sunpad
- Radar arch
- Bimini Top
- TNT Lift

## **Electronics**

- Raymarine Hybrid Touch Plotter
- (2) Raymarine E120 display colour screen 12.1" GPS plotter
- (2) Raymarine Tridata Auto-Pilot
- (2) Raymarine ST290 Echosounder
- Raymarine Ray 240E VHF with DSC/GMDSS
- Raymarine VHF Radio
- ACR EPIRB
- Samsung 42" LCD TV
- Fusion SAT Radio
- KVH SAT System

## **Mechanical**

The engine room is accessed from a large hatch in the aft deck or via a watertight door that separates it from the crew quarters.

- (2) Mase 20 KW Generators
- Reverse cycle A/C
- Bow and Stern Thruster
- Media Washer/Dryer Combo
- Tecnomar Watermaker

## Exclusions

Tender NOT included in sale

## Disclaimer

The company offers the details of this vessel in good faith but cannot guarantee or warrant the accuracy of this information nor warrant the condition of the vessel. A buyer should instruct his agents, or his surveyors, to investigate such details as the buyer desires validated. This vessel is offered subject to prior sale, price change or withdrawal without notice.

## CONTACT BROKER



### Atlantic Yacht & Ship, Inc.

Harbour Towne Marina  
850 NE 3rd Street  
Suite 213  
Dania Beach FL 33004 USA  
Phone: 954.921.1500  
Toll Free: 888.602.8105  
Fax: 954.921.1518  
<https://atlanticyachtandship.com>



### Atlantic Sales

#### Yacht Sales

Harbour Towne Marina  
850 NE 3rd Street  
Suite 213  
Dania Beach FL 33004 USA  
Office: 954.921.1500  
Email: [info@ayssales.com](mailto:info@ayssales.com)

